

# Hearts for MICS Thorax Trainer

MICS Mitral Hearts include **Pericardia**, **CABG Sites**, patent chambers, and **Left Atria** with delicate, suturable, **mitral valve** leaflets. These realistic soft heart models have highly detailed exteriors, extended vasculature and lifelike atrial appendages. **Left Atria**, **Pericardia**, and **CABG Sites** are designed to be replaced, for repeatable trainings with fresh anatomy.

	BEATING	PATENT	ADULT	LARGER ADULT
(#1390) MICS MITRAL CABG HEART		♥	♥	
(#1413) MICS MITRAL CABG BEATING HEART W/ ANCILLARY	♥	♥	♥	
(#1406) MICS MITRAL LARGER ADULT CABG HEART		♥		♥
(#1407) MICS MITRAL LARGER ADULT CABG BEATING HEART W/ ANCILLARY	♥	♥		♥

**Beating Hearts** Our patented beating heart technology accurately simulates systole/diastole and allows control of heart rate for on- or off-pump training.

**Ancillary** The Beating Heart Controller and Air Compressor serve to animate the beating heart.

**Left Atria** feature: incisable/suturable Waterston’s groove, valve annulus, and mitral valve leaflets. Left Atria are held to the heart magnetically, making rapid exchange possible. Choose from Left Atria with delicate prolapsed mitral valves or healthy valves with — or without — attached chordae and papillaries.

**CABG Sites** Suturable, Native Coronary Artery segments embedded in the epicardium of our CABG Hearts permit repeat practice of anastomoses. Results may be preserved and presented to mentoring faculty for review and progress assessment. Each Native Coronary Artery segment may be used a number of times and then replaced, allowing years of training with a single heart.

**Pericardia** Incisable pericardial sacs include an indication of phrenic nerves. Robust enough to be used multiple times before replacement is necessary.

**Normal** Representing a patient of average body type (adult about 5’7” [170 cm] or less), the heart is approximately 5” [127 mm] atria to ape 3.5” [89 mm] wide x 3” [76 mm] anterior to posterior.

**Larger Adult** Representing a patient with a larger body type (adult over 5’8” [173 cm]), the heart is approximately 8” [210 mm] from atria to apex x 4.5” [114 mm] wide x 4” [102 mm] anterior to posterior.

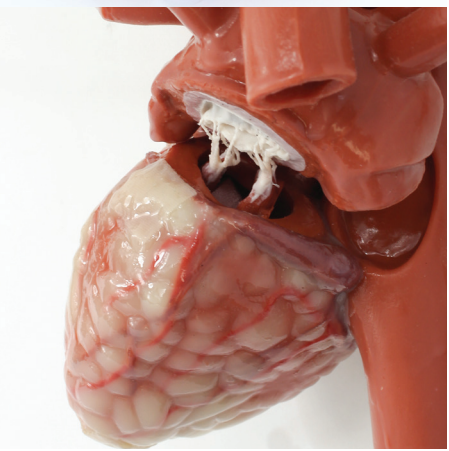


Left Atria with attached chordae and papillaries only for use in non-beating hearts.



## MICS Thorax Trainer and MICS Mital CABG Hearts

Product #1376



Realistic Mimetic Anatomy for Deliberate Practice of MICS CABG and MIS Mitral Valve Procedures

- Intercostal or Sub-Xiphoid Approach
- Thoracoscopic IMA Takedown
- Coronary Artery Bypass Grafting
- Mitral Valve Repair
- Annuloplasty

TO ORDER CALL: +1.413.528.7744 or 800.562.7569

thecgroup.com



(#1376)

# MICS Thorax

## INCLUDES

- One pair of replaceable Chest Walls (#1381 & #1382)
- One pair of Pliable Lungs (#1394 & #1395)
- Fixed diaphragm
- Permanent posterior/superior chest panels (ribs 1–3)
- Permanent spine and sternum
- Locking, rotating, and tilting trainer base



INSTITUTIONAL DISCOUNTS AVAILABLE

**TO ORDER CALL: +1.413.528.7744 or 800.562.7569** [info@thecgroup.com](mailto:info@thecgroup.com)

Quantity discounts may be available. Many of our products are made to order; please discuss any timing requirements with us in advance.

**MICS Thorax Trainer** anatomy was developed from patient CT data and is the most immersive simulation trainer available for MICS mitral valve and CABG procedures.

Replaceable chest walls contain flexible ribs (4–8), with appropriate intercostal spaces, embedded in mimetic tissue. Chest walls support incision, device placement, and the use of MICS rib spreaders. Hearts tether magnetically to diaphragm and collapsed lungs to maintain appropriate anatomical relationships within the thoracic cavity. The trainer base accommodates multi-angle positioning.

## Accessorize MICS Thorax to Suit Your Training Needs & Budget

### MICS Mitral CABG Hearts and Beating Hearts

Present an immersive solution with appropriate pathologies for mitral valve repair, annular ring placement, and anastomosis. They feature **Replaceable: Left Atria, CABG sites, and Pericardia** to allow repeatable trainings with fresh anatomy and years of use with a single heart.

### Internal Mammary Arteries

Permit learner to practice thoracoscopic takedown and grafting. Replacable LIMA and RIMA pedicles attach to the posterior of the trainer sternum. Each holds a suturable internal mammary artery that may be dissected from surrounding tissue and grafted to CABG sites on a MICS Mitral Heart.



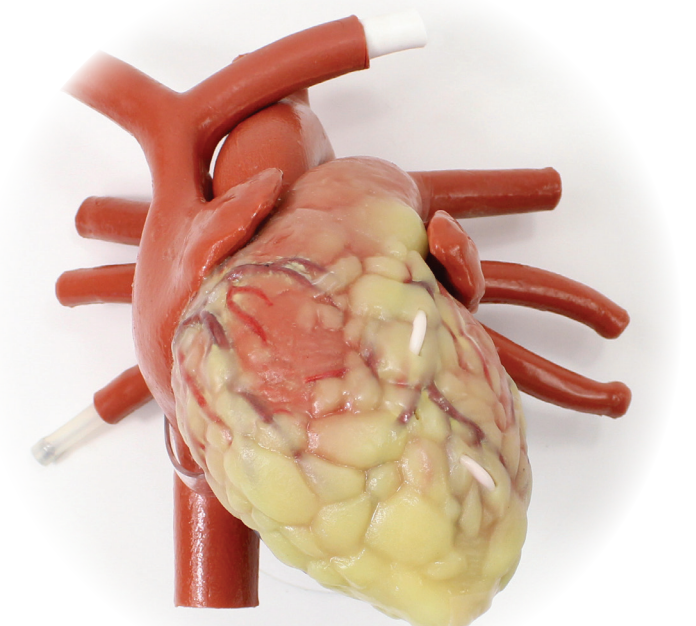
### Internal Lighting

LED installed beneath sternum aids in visualization during procedures or demonstration.



### Shipping Case

ATA-rated watertight shipping case customized to accept MICS Thorax and components. Recommended for storage and shipping.



## Replaceable Parts

### Permit Repeat Practice

- LIMA or RIMA
- Mimetic-tissue Chest Walls, right or left
- Left Atria with life-like mitral valves
- CABG Sites/Native Coronary Arteries
- Incisable Pericardia